



BuildOmaha
.org



Fall Parade of HOMES

October 19-20 & 26-27, 2019

LET'S BUILD OMAHA TOGETHER.

Cover photo courtesy of Advantage Development Inc.

PRESENTING SPONSOR



METROPOLITAN
UTILITIES DISTRICT



Proud sponsor of the 2019 Fall Parade of Homes!

Enjoying the outdoors or indoors is best
when choosing natural gas!
Efficient, reliable, comfortable and clean.



METROPOLITAN
UTILITIES DISTRICT

mudomaha.com





EXPAND YOUR POSSIBILITIES

Get inspired with exciting custom options from Pella.

Call today for your free in-home consultation and learn more.



Pella Window & Door Showrooms

Lincoln | 6891 A Street, Suite 118, Clocktower Center | 402-484-5700

Omaha | 9845 South 142nd Street | 402-493-1350

PellaOmaha.com

© 2019 Pella Corporation

They've helped you
OUTGROW your place.
We'll help you finance
a **BIGGER** one.



CONSTRUCTION LENDING



Michael Bittner NMLS 408474
MBittner@PremierBankNE.com



Todd Clevenger NMLS 407959
TClevenger@PremierBankNE.com



Osbaldo Sanchez NMLS 1059272
OSanchez@PremierBankNE.com

MORTGAGE LENDING



Dave Smith NMLS 1937454
DSmith@PremierBankNE.com



Guthrie Steen NMLS 400111
GSteen@PremierBankNE.com



Gregg Bailey NMLS 400296
GBailey@PremierBankNE.com



Kalee Corcoran NMLS 457170
KCorcoran@PremierBankNE.com

www.PremierBankNE.com | 402.558.8000

Welcome to the

2019 Fall Parade of Homes Tour

Build Omaha in association with the Metropolitan Utilities District are proud to present the 2019 Fall Parade of Homes. This year the Parade of Homes features 33 custom homes in 17 unique neighborhoods across the Omaha metro area. Home buyers can shop for their custom dream home from Papillion to Elkhorn.

Build Omaha is a builder driven association whose mission is to provide a positive open environment for the new home construction industry in the Omaha metropolitan area. We strive to work with all facets of the building industry from city halls, to suppliers, to subcontractors, to real estate agents & consumers, to government organizations, etc. By bringing these facets together we form a unified group that continues to work at keeping the American dream of home ownership alive and affordable.

Now with this guide in your possession, you can determine where to start your own search. Use the map to search by location, the price listing to search by budget, or visit all of the homes for amazing floor plans and ideas to create your own custom home. The Builders and their representatives will be on hand to answer your questions. Admission is Free.

PRESENTED BY



BuildOmaha
.org

PRESENTING SPONSOR



METROPOLITAN
UTILITIES DISTRICT

BUILD OMAHA BOARD OF DIRECTORS

Jerry Torczon
Steve Taft
Al Belt
Alan Hans
Todd Gaver
Eric Lakeman

PUBLISHED BY

Build Omaha
P.O. Box 390232
Omaha, NE 68138
402-505-5002
www.buildomaha.org

SALES & MARKETING/ PHOTOGRAPHY

Mary Jayne Throener
Gabby Young
Build Omaha

PUBLICATION DESIGN

Allison Leeper
TMT Graphic Designs

For more information or to
become a member, contact
402-505-5002
www.buildomaha.org



BuildOmaha
.org



PAGE 4

Homes Listed by Subdivision

PAGE 5

Map of Homes

PAGE 6

Homes Listed by Price

PAGES 7-47

Fall Parade of Homes Entries

PAGES 48

Build Omaha Members

Let's Build Omaha Together.

Cover Photo courtesy of
Advantage Development Inc.
Entry No. 21



BuildOmaha
.org

Fall Parade of HOMES

October 19-20 & 26-27, 2019

Lets Build
Omaha
Together.

Liberty

- 1** **Horizon Homes**
12214 Quail Drive

Shadow Lake 2

- 2** **Barr Homes**
12608 S 74th Street
- 3** **Castlebridge Homes**
12704 S 75th Avenue
- 4** **Griffin Homes**
12620 S 74th Street
- 5** **Nelson Builders**
12605 S 78th Street
- 6** **Woodland Homes**
12605 S 73 Street
- 7** **Pine Crest Homes**
12320 S 73rd Avenue

Ashbury Creek

- 8** **Al Belt Custom Homes**
11461 Mercury Street

Granite Lake

- 9** **Advantage Development Inc.**
10114 S 105th Avenue
- 10** **Griffin Homes**
9953 S 106th Street
- 11** **Trademark Homes, Inc.**
10507 Superior Drive

The Cove at North Shore

- 12** **Woodland Homes**
10722 S 126 Court

Aspen Creek

- 13** **Al Belt Custom Homes**
10603 S 188th Street
- 14** **Pine Crest Homes**
18512 Merion Drive
- 15** **Zych Construction**
18659 Schofield Drive

Aspen Creek North

- 16** **Advantage Development Inc.**
18609 Camelback Avenue
- 17** **Silverstone Custom Homes
by Design**
18822 Riviera Drive

Garden Oaks

- 18** **Al Belt Custom Homes**
18209 Redwood Street

Falling Waters

- 19** **Pine Crest Homes**
20015 Polk Street

Westbury Creek

- 20** **Richland Homes**
4112 S 213 Street

Westbury Farm

- 21** **Advantage Development Inc.**
21760 I Street
- 22** **Nelson Builders**
21763 K Street
- 23** **Showcase Homes**
4215 S 218 Avenue

Westbury Farm (Continued)

- 24** **Woodland Homes**
21813 Blaine Street
- 25** **Woodland Homes**
4311 S 219 Street
- 26** **Woodland Homes**
21711 I Street

Grandview Ridge Estates

- 27** **Nathan Homes**
3872 S 208th Street
- 28** **Sierra Homes**
3977 George B Lake Pkwy

Blue Sage Creek

- 29** **Ideal Designs Custom Homes**
21415 A Street

Windgate Ranch

- 30** **Nathan Homes**
2008 S 211th Street

Spruce Ridge

- 31** **Paradise Homes**
2404 N 188 Terrace

Indian Pointe

- 32** **Timberline Homes**
18425 Boyd Street

Pine Creek

- 33** **Hill Custom Homes**
16017 Weber Street

PRESENTING SPONSOR



Tour 33 Custom Homes throughout the Metro Area! Free to the Public!

TOUR HOURS:

Saturday & Sunday (Oct. 19-20 & 26-27)

from Noon - 6pm





BuildOmaha
.org

Parade Homes Listed by Price



Lets Build
Omaha
Together.

\$250,000 - \$299,000

- 20 Richland Homes**
4112 S 213 Street
Westbury Creek
- 33 Hill Custom Homes**
16017 Weber Street
Pine Creek

\$300,000 - \$349,000

- 7 Pine Crest Homes**
12320 S 73rd Avenue
Shadow Lake 2
- 1 Horizon Homes**
12214 Quail Drive
Liberty
- 14 Pine Crest Homes**
18512 Merion Drive
Aspen Creek
- 19 Pine Crest Homes**
20015 Polk Street
Falling Waters

\$350,000 - \$399,000

- 11 Trademark Homes, Inc.**
10507 Superior Drive
Granite Lake
- 2 Barr Homes**
12608 S 74th Street
Shadow Lake 2

\$400,000 - \$449,000

- 31 Paradise Homes**
2404 N 188 Terrace
Spruce Ridge

\$400,000 - \$449,000

(Continued)

- 10 Griffin Homes**
9953 S 106th Street
Granite Lake
- 4 Griffin Homes**
12620 S 74th Street
Shadow Lake 2
- 24 Woodland Homes**
21813 Blaine Street
Westbury Farm
- 15 Zych Construction**
18659 Schofield Drive
Aspen Creek
- 9 Advantage Development Inc.**
10114 S 105th Avenue
Granite Lake
- 32 Timberline Homes**
18425 Boyd Street
Indian Pointe
- 5 Nelson Builders**
12605 S 78th Street
Shadow Lake 2
- 3 Castlebridge Homes**
12704 S 75th Avenue
Shadow Lake 2
- 8 Al Belt Custom Homes**
11461 Mercury Street
Ashbury Creek
- 22 Nelson Builders**
21763 K Street
Westbury Farm
- 13 Al Belt Custom Homes**
10603 S 188th Street
Aspen Creek

\$450,000 - \$499,000

- 12 Woodland Homes**
10722 S 126 Court
The Cove at North Shore
- 23 Showcase Homes**
4215 S 218 Avenue
Westbury Farm
- 26 Woodland Homes**
21711 I Street
Westbury Farm
- 17 Silverstone Custom Homes by Design**
18822 Riviera Drive
Aspen Creek North
- 16 Advantage Development Inc.**
18609 Camelback Avenue
Aspen Creek

\$500,000 - \$549,000

- 25 Woodland Homes**
4311 S 219 Street
Westbury Farm
- 28 Sierra Homes**
3977 George B Lake Pkwy
Grandview Ridge Estates
- 6 Woodland Homes**
12605 S 73 Street
Shadow Lake 2
- 21 Advantage Development Inc.**
21760 I Street
Westbury Farm

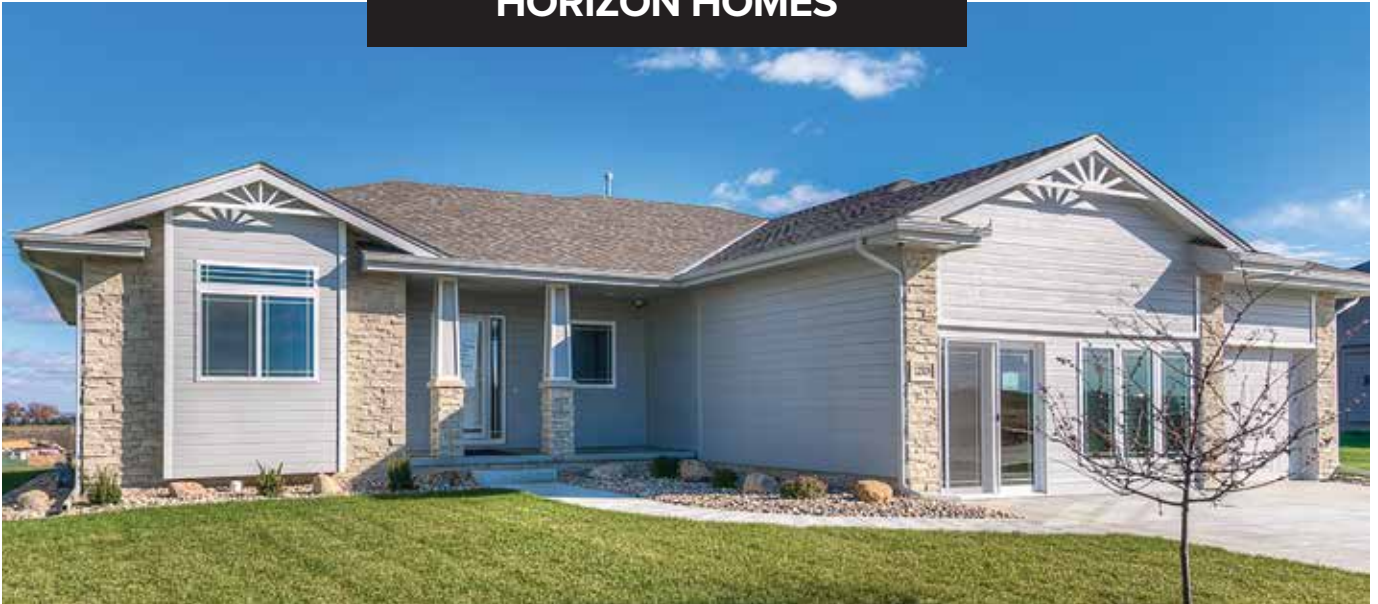
\$600,000 - \$699,000

- 18 Al Belt Custom Homes**
18209 Redwood Street
Garden Oaks
- 30 Nathan Homes**
2008 S 211th Street
Windgate Ranch
- 29 Ideal Designs Custom Homes**
21415 A Street
Blue Sage Creek

\$700,000 - \$749,000

- 27 Nathan Homes**
3872 S 208th Street
Grandview Ridge Estates

TOUR HOURS:
Saturday & Sunday
(Oct. 19-20 & 26-27)
from Noon - 6pm



\$329,160 | 3 Bed | 2 Bath | 4 Car | 1,800 SF

SALES BY:

AARON COOPER | 402-709-1117
TABITHA COOPER | 402-210-5055

BERKSHIRE HATHAWAY HOMESERVICES
AMBASSADOR REAL ESTATE

HOME NUMBER 1

12214 Quail Drive
Liberty

Looking for that open floor plan? Loaded! Quartz Kitchen with island & Hidden pantry, Custom hardwood floor, 3+ car garage, Walk-in 2 head shower in Master, built super energy efficient with 2 x 6 exterior walls.



BARR HOMES



HOME NUMBER 2

12608 S 74th Street
Shadow Lake 2

\$393,646 | 4 Bed | 3 Bath | 4 Car | 2,552 SF

SALES BY:

GREG BARRETT | 402-651-7823

JOHN BARRETT | 402-670-9387

BERKSHIRE HATHAWAY HOMESERVICES
AMBASSADOR REAL ESTATE

Welcome to this Barr Homes Callaway plan, 2 story 4 bedroom, 3 bathroom. Three car garage with 4th car tandem holds all the extra storage you desire. Stunning new kitchen will make sure your home to be the next hub for family holidays! Kitchen boasts an enormous island, hidden walk-in pantry, stainless steel appliances, Cambria quartz countertops. Large trapezoid windows frame a sun room dinette off kitchen. Open Great Room features a stone fireplace with wood mantle and large windows to floor. Mud room off garage entry. Laundry on the second floor. J&J bath upstairs. Master bedroom with large walk-in closet, walk-in shower, whirlpool, & double sink vanity. Quality built, beautiful home by a family owned home builder.

BARR HOMES *Quality Custom Homes*
www.barrhomesomaha.com



FALL PARADE OF HOMES
CASTLEBRIDGE HOMES, INC.



\$443.999 | 4 Bed | 3 Bath | 3 Car | 3,006 SF

SALES BY:

PETE SABALIAUSKAS | 402-250-3431

BERKSHIRE HATHAWAY HOMESERVICES
AMBASSADOR REAL ESTATE

HOME NUMBER 3

**12704 S 75th Avenue
Shadow Lake 2**

Castlebridge Homes invites you to view their popular ranch plan "The Lucas 1797" located in popular Shadow Lake 2 subdivision in Papillion. This quality crafted open concept plan features 4 bedrooms, 3 baths, custom birch cabinets, large island, granite countertops, hardwood floors, butler pantry cabinet with wine frig, corner fireplace, main floor den with French doors, built-in bookcase, drop zone area, private master suite with window seat, walk-in closet, large walk-in shower, whirlpool and double sinks. The finished lower level includes large family room, wet bar, two bedrooms and a full bath. You will enjoy your evenings relaxing on your covered deck on this premier walk-out lot backing to a private greenspace.



www.castlebridgehomesomaha.com



PRESENTING SPONSOR

GRIFFIN HOMES



HOME NUMBER 4

12620 S 74th Street
Shadow Lake 2

\$414,950 | 4 Bed | 3 Bath | 3+ Car | 2,600 SF

SALES BY:

MITCH GRIFFIN | 402-659-8568

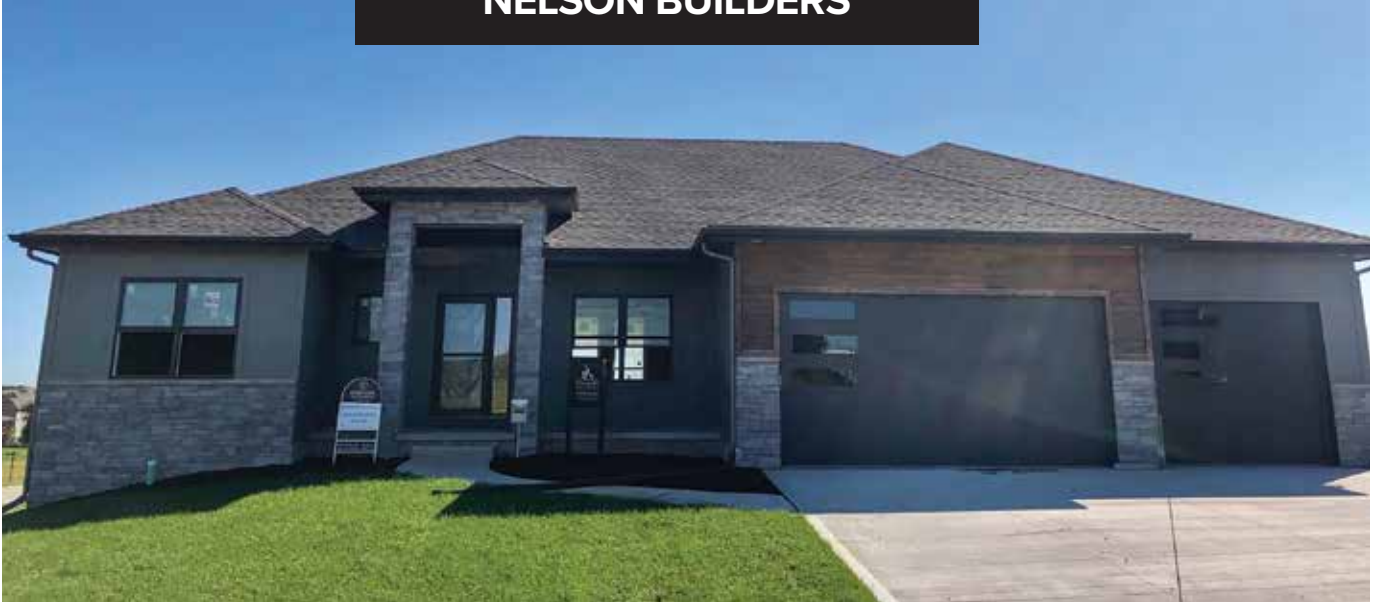
GRIFFIN TEAM | 402-612-4305

BERKSHIRE HATHAWAY HOMESERVICES
AMBASSADOR REAL ESTATE

Don't miss this beautiful home in Shadow Lake 2, quality built by Griffin Homes. Open and light, 2 Story home with lovely Kitchen, Dinette and Family Room. Very practical Drop Zone Area with Bench/Cubbies and Walk-In Closet. 3 Car Garage with extra 10' x 6' storage area and door to the backyard. Great new neighborhood, only 7 blocks to the Shadow Lake Towne Center and Bell Elementary School. Large Master Bedroom and Bath with Walk-in Shower, corner whirlpool tub and his and her vanities.



FALL PARADE OF HOMES
NELSON BUILDERS



\$443,000 | 4 Bed | 3 Bath | 3 Car | 3,309 SF

SALES BY:

MARIE OTIS | 402-670-8775

BERKSHIRE HATHAWAY HOMESERVICES
AMBASSADOR REAL ESTATE

HOME NUMBER 5

**12605 S 78th Street
Shadow Lake 2**

Be the first to enjoy this brand-new Montgomery walkout ranch home by Nelson Builders.

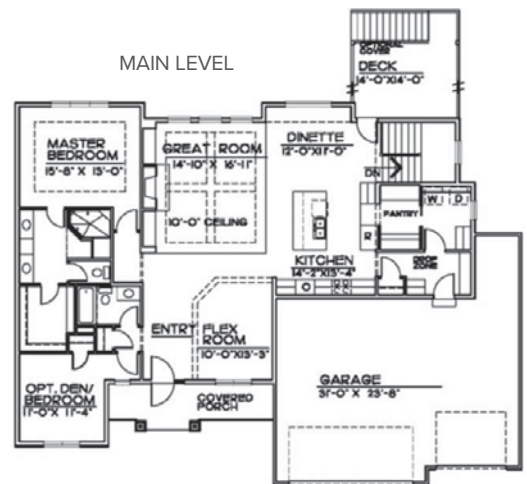
The kitchen is designed for people who like to cook and entertain at the same time opening to the great room and dining area; featuring massive center island, chef's gas cooktop and stainless steel hood vent, walk-through butler's pantry, under cabinet outlets & lights, quartz countertops and tile back splash.

Imagine gathering with family and friends in the thoughtfully designed great room with custom stone fireplace flanked by lower cabinets and distinctive floating shelves. Extra windows flood the room with natural light drawing attention to the unique box grid ceiling.

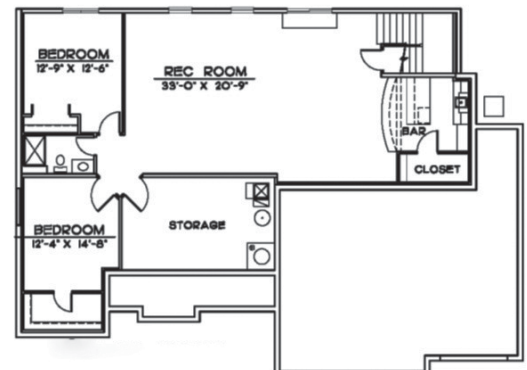
The spacious master retreat with walk in closet boasts a bath to spoil you with a large walk-in dual-headed shower, and double sinks with a decorative arched ceiling.

The basement is ready for whatever your passions may be... spacious enough for a media and game area with a wet bar and daylight windows. Two bedrooms and a 3/4 bath complete this area.

Take a look, you won't be disappointed!



LOWER LEVEL



www.nelsonbuildersomaha.com



Builders Supply Company is devoted entirely to helping you bring your building, remodeling or project ideas to life.

Builders Supply's Home Design Center is one of the most comprehensive and innovative home showcases in the United States. Walking into the Home Design Center is like having a contemporary living magazine come to life right in front of you. There are hundreds of options for cabinets, doors and windows, fireplaces, decks, and so much more. Our beautiful "real life" displays enable you to get a first hand look at the products you're considering. Whether building a new home or updating an existing one, our professional design staff is ready to assist you.



We've provided you with excellent service and stood by our products since 1951. You can expect nothing less every day we're on the job with you.

- Lumber
- Wall Panels
- Trusses
- Roofing
- Windows
- Doors
- Mouldings
- Hardware
- Siding
- Insulation
- Composite Decking
- Pneumatic Nails



**BUILDERS^{INC.}
SUPPLY CO.**
— WHERE QUALITY COSTS LESS

We build on
our reputation
everyday...

5701 S. 72nd Street
Omaha, NE 68127

402.331.4500

builderssupplyco.com

FALL PARADE OF HOMES
WOODLAND HOMES



\$540,000 | 4 Bed | 4 Bath | 3+ Car | 3,106 SF

SALES BY:

JEFF ELSBERRY | 402-690-0900
NP DODGE REAL ESTATE

HOME NUMBER 6

12605 S 73rd Street
Shadow Lake 2

Come experience the Woodland Homes difference, quality construction for over 40 years. Our new Concord Cabernet floor plan is a must see with today's new ideas and features. Our open concept plan features a large kitchen with a 9x5 island, walk-in pantry, cabinets to the ceiling, lockers with drop zone and main floor office. Cathedral ceiling in dinette with shiplap with wood beam. Zoned heating and cooling, master bedroom with fireplace in sitting room, master bath features free standing bathtub with large walk-in shower. Oversized 3 car tandem garage loaded with extras.



BuildWoodland.com



FALL PARADE OF HOMES
PINE CREST HOMES



HOME NUMBER 7

**12320 S 73rd Avenue
Shadow Lake 2**

\$320,785 | 3 Bed | 3 Bath | 2 Car | 2,638 SF

SALES BY:

LYNN SMITH | 402-990-4587

**BERKSHIRE HATHAWAY HOMESERVICES
AMBASSADOR REAL ESTATE**

The Sorrento says “Welcome Home” with its charming covered front porch. Inside you will enjoy the main floor living and an open layout where kitchen flows into great room so the cooks can enjoy their company (and the company can enjoy the cooks) without overcrowding the kitchen. At Pine Crest, we know it is important to recharge, and the Master Suite offer a space to help you relax. Enjoy a good book, take a soothing shower, or get a rejuvenating night’s sleep.

Ask anyone what they’d like more of in their life, and chances are most will say, “Time.” With a Pine Crest villa, you will be able to spend more time on the things you love, and less time on the things you don’t with many outdoor maintenance chores managed on your behalf.

The Sorrento is one of five new ranch villa plans created by Pine Crest Homes for the homebuyer who wants to live well without buying big. These homes featuring simple, thoughtful and efficient layouts that maximize space and livability.

Reclaim your free time, and discover what villas living means to you.



BuildPineCrest.com

AL BELT CUSTOM HOMES



\$444,900 | 4 Bed | 3 Bath | 3 Car | 2,791 SF

SALES BY:

BRIAN WILSON | 402-850-0731

BERKSHIRE HATHAWAY HOMESERVICES
AMBASSADOR REAL ESTATE

HOME NUMBER 8

**11461 Mercury Street
Ashbury Creek**

Al Belt Custom Homes newest 2 story hearth room plan, the 2791, in popular Ashbury Creek. This home features 4 large bedrooms, 3 baths, a 3-car garage, amazing open floor plan with 4" rift and quarter sawn oak flooring, massive u-shaped kitchen with oversized painted cabinetry, quartz countertops, stainless steel appliances and 6' island with breakfast bar. Separate formal dining

room/office. Cozy hearth room with stone to ceiling fireplace and 2 window seats. Large great room has lots of windows and 9' ceilings. Luxurious master suite with whirlpool, double sinks and tiled walk-in shower with 2 heads. Fantastic master bedroom closet. Pella aluminum clad windows, super insulation package.



www.albeltcustomhomes.com





**FIREPLACE
STONE & PATIO**

Inspired Living, Inside and Out

HEAT & GLO

No one builds a better fire

Embrace the crisp, cool days of Autumn and be ready to cozy up by the fireplace this winter. Visit us today to schedule your annual service appointment, plan a new gas fireplace insert or design a stunning focal point with a fireplace facelift that you'll be able to enjoy all season long.

402.884.8600 | FireplaceStonePatio.com
13709 Industrial Road Omaha, NE 68137



**LAMP
RYNEARSON**

Leaving a Legacy of Enduring
Improvements to our Communities

· Since 1959 ·

14710 W. Dodge Rd. Omaha, NE 68154 402.496.2498 LampRynearson.com

YOUR LEGAL
**BUILDING
BLOCKS**

Representing
Developers, Builders
and SIDs on your
road to **SUCCESS.**



ADAMS & SULLIVAN PC, LLO
ATTORNEYS AT LAW

adamsandsullivan.com

402-339-9550

FALL PARADE OF HOMES
ADVANTAGE DEVELOPMENT INC.



\$439,147 | 4 Bed | 3 Bath | 3 Car | 3,015 SF

SALES BY:

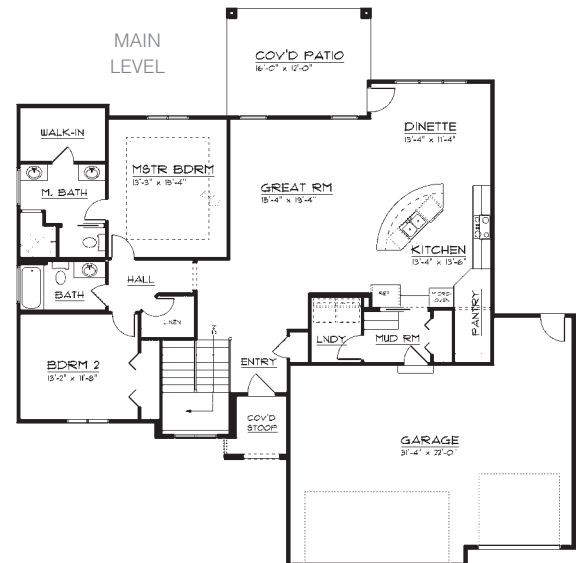
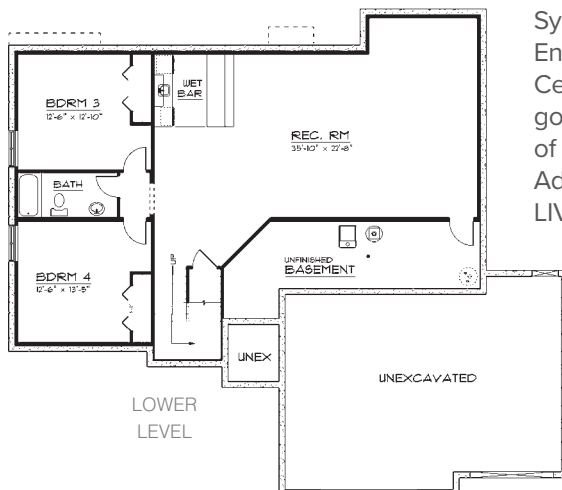
JENN BENNETT | 402-689-2378
SHANNON SALEM | 402-990-0179
 BERKSHIRE HATHAWAY HOMESERVICES
 AMBASSADOR REAL ESTATE

HOME NUMBER 9

10114 S 105th Avenue
Granite Lake

Come experience “The Shaw” custom ranch home, one of our most popular models! The efficiency of this floor plan gives you all the extras you deserve without the high price tag. Soaring 10 foot ceilings and 8 foot doors coupled with exquisite finishes gives this home a true “custom” feel. “Zero Entry” options available. Price includes lot, “smart home” technology, finished basement & landscaping. Come take a look for yourself and see what a difference quality build & products makes! Marvin Integrity window package, Zipwall house wrap, Trane 95% Efficient HVAC, Kohler plumbing fixtures, 11

7/8" I Joist Silent Floor System, REScheck Energy Efficient Certified, only the best going into every one of our homes! Choose Advantage and truly LIVE in what you LOVE!



ADVANTAGE
DEVELOPMENT
 innovative style...innovative builder
 homes by Alan Hans

www.advantagedevelopmentinc.com



PRESENTING SPONSOR

GRIFFIN HOMES



HOME NUMBER 10

9953 S 106th Street
Granite Lake

\$411,500 | 4 Bed | 3 Bath | 3 Car | 2,600 SF

SALES BY:

MITCH GRIFFIN | 402-659-8568

GRIFFIN TEAM | 402-612-4305

BERKSHIRE HATHAWAY HOMESERVICES
AMBASSADOR REAL ESTATE



Visit this home to see firsthand the quality features that Griffin Homes puts in each of their homes. Lots of thought and planning goes into each. For instance, this home has a retaining wall in the backyard so that the lot will be easier to mow and would be a great feature to surround a future Fire Pit. The open, Two Story home has beautiful finishes in the Gray Color Palettes. Wonderful Kitchen, Dinette and Family Room; perfect for family and entertaining. The Garage Entry features a Drop Zone, Bench & Cubbies, plus a Spacious Closet with extra storage shelves. The Laundry Room is conveniently located on the second floor close to all four bedrooms. Don't miss the fantastic Walk-in Shower in the Master Bath!



PRESENTING SPONSOR



FALL PARADE OF HOMES
TRADEMARK HOMES, INC.



\$375,000 | 3 Bed | 3 Bath | 3 Car | 1,887 SF

SALES BY:

JIM BRAUN | 402-880-9346

STEVE LARSEN | 402-672-5450

BERKSHIRE HATHAWAY HOMESERVICES
AMBASSADOR REAL ESTATE

HOME NUMBER 11

**10507 Superior Drive
Granite Lake**

- Spacious and open design
- Large private master suite
- Jack and jill bath
- Covered patio
- Huge walk-in pantry
- Oversized 3 stall garage
- Sprinkler system



www.trademarkomaha.com



FALL PARADE OF HOMES
WOODLAND HOMES



HOME NUMBER 12

**10722 S 126th Court
The Cove**

\$469,778 | 4 Bed | 3 Bath | 2 Car | 2,960 SF

SALES BY:

TERRY STORK | 402-657-2067

**BERKSHIRE HATHAWAY HOMESERVICES
AMBASSADOR REAL ESTATE**



Welcome to “The Cove” at North Shore; a gated luxury villa community by Woodland Homes, Inc.

A care-free lifestyle awaits you in this 4 bedroom, 3 bathroom, 2 car garage walkout ranch villa. Enjoy the open floor plan, conveniently located laundry room off the Master closet, walk-in pantry, and large Kitchen island. Wood flooring is featured in the entry, Great Room, Kitchen, and Dinette. The beamed cathedral ceiling and stone to ceiling fireplace in the Great Room are impressive. The finished lower level features 2 bedrooms, a large rec room, stone fireplace and a wet bar. Abandon your mower and snow shovel to enjoy life at its fullest in your new Woodland Homes villa!



“The Cove” has lots available.

**Contact Terry Stork at 402.657.2067
to secure your lot today!**



BuildWoodland.com

AL BELT CUSTOM HOMES



\$449,900 | 4 Bed | 3 Bath | 3 Car | 2,810 SF

SALES BY:

KAREN JENNINGS | 402-290-6296

BERKSHIRE HATHAWAY HOMESERVICES
AMBASSADOR REAL ESTATE

HOME NUMBER 13

10603 S. 188th Street
Aspen Creek

Sensational Two Story in Gretna's Aspen Creek! Custom, west-facing home sits on a corner lot with beautiful stone accents, covered front entry, and is nicely landscaped. Al Belt Custom Homes features Pella windows, cottage lap siding, R-50 insulation, and 95% efficient furnace. Open and exquisite interior features hardwood floors, iron balusters, crown molding, white/birch cabinets, granite counters, and stone fireplace. Spacious kitchen

is open to the dining area, family room, and hearth room. Formal dining room/office space is just off the front entry. Second floor includes 4 large bedrooms, 2 full baths, and convenient laundry room. Great drop zone area leads to sizeable 3 car garage. Covered patio and spacious backyard. Just blocks to Aspen Creek Elementary and Middle School. Are you ready to build your Al Belt Custom Dream Home today?



www.albeltcustomhomes.com



FALL PARADE OF HOMES
PINE CREST HOMES



HOME NUMBER 14

18512 Merion Drive
Aspen Creek

\$345-\$400 | 4 Bed | 2.5 Bath | 3 Car | 2,568 SF

SALES BY:

JULIE HILLMER | 402-968-4963

MIKE PETTID | 402-871-8692

BERKSHIRE HATHAWAY HOMESERVICES
AMBASSADOR REAL ESTATE

True to its name, The River by Pine Crest Homes really flows to the rhythm of family life.

The main floor plan keeps the family together but comfortable. The open kitchen and dining area give you plenty of room to try out that new recipe or build the science fair project. When the time comes to snuggle up in front of the TV, everyone can pile into the huge family room. The bonus whatever room flexes to your needs – fill it with whatever completes your home. With this much space, your home just might become the new hangout spot for the soccer team or the book club.

Everyone gets a jumbo bedroom upstairs – we're talking ample room for playtime and closet space for days. The second-floor laundry room and bathroom keep your clutter neatly tucked away.

Sure, the kids' rooms are great, but we don't call it the owner's suite for nothing. As the rulers of this roost you'll spend your quiet time in the spacious bedroom complete with a private bathroom and a walk-in closet that begs to be filled up. Relax, you earned it

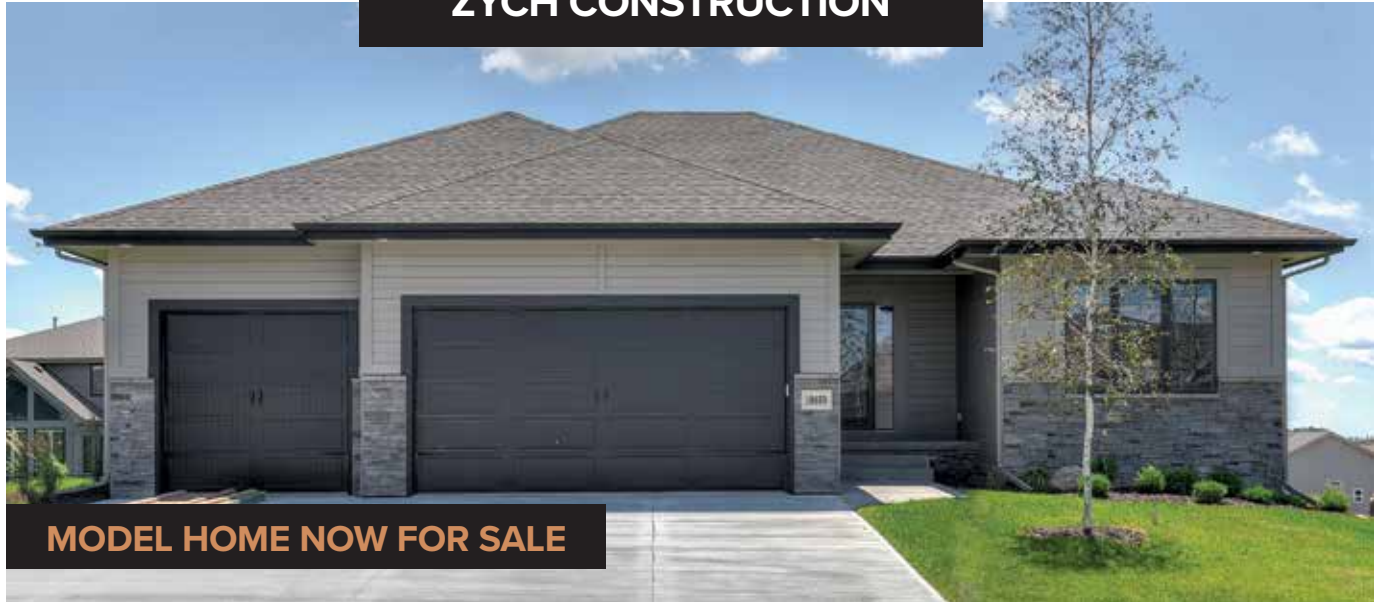


BuildPineCrest.com

PRESENTING SPONSOR



FALL PARADE OF HOMES
ZYCH CONSTRUCTION



MODEL HOME NOW FOR SALE

\$425,000 | 3 Bed | 3 Bath | 3 Car | 3,254 SF

SALES BY:

TRACY ZYCH | 402-718-5800

BERKSHIRE HATHAWAY HOMESERVICES
AMBASSADOR REAL ESTATE

HOME NUMBER 15

**18659 Schofield Drive
Aspen Creek**

- 3 bed / 3 bath / 3 car walk-out ranch plan
- Bright white kitchen with walk-in pantry
- Gas range, granite countertops
- Spacious great room with cozy stone fireplace
- Walk-out finished lower level with 3rd bed, 3/4 bath, family room
- Covered deck with sightly views!



www.zychconstruction.com



**HOME NUMBER 16**

18609 Camelback Avenue
Aspen Creek North

\$499,444 | 5 Bed | 4 Bath | 3 Car | 2,824 SF

SALES BY:

MANDI LACKAS | 402-657-7676

NEBRASKA REALTY

Advantage Development, Inc has given it's Sawyer 2-Story a Modern Farmhouse twist! Grand entry w/ soaring ceilings, beautiful staircase w/ balcony look-over. Open concept kitchen/dining/living area. Popular LVP flooring, unique over-sized base & trim, 8' doors, & 10 foot ceilings throughout main level. Main level study or bedroom off the kitchen, large hidden pantry, mudroom w/locker area & built-in drop-zone. Large power bath set away from the main area. Convenient 2nd level laundry, master bedroom w/ sitting area, gorgeous on-suite bath with walk-in shower & large attached closet. Shared access bath for beds 2 & 3, on-suite bath w/bed 4. This home features distressed wood beams, mantle, and shelving, as well as distressed shiplap throughout, and backs to a wide open green space & elementary school. It's modern farmhouse flair is beautiful and a must see!



ADVANTAGE DEVELOPMENT INC.
innovative style...innovative builder
homes by Alan Hans

www.advantagedevelopmentinc.com

FALL PARADE OF HOMES

SILVERSTONE

CUSTOM HOMES BY DESIGN



\$489,600 | 5 Bed | 3.5 Bath | 3+ Car | 3,504 SF

SALES BY:

BEN PROCTOR | 402-965-1848

BERKSHIRE HATHAWAY HOMESERVICES
AMBASSADOR REAL ESTATE

HOME NUMBER 17

18822 Riviera Drive
Aspen Creek North

Welcome to Silverstone Building Co.'s newest two story model home. Exceptional curb appeal features a modern prairie style with contrasting siding patterns and colors complimented by natural cedar and stone accents. An open floor plan filled with natural light from oversized windows showcases solid wood floors, modern design touches by Brianne Wilhelm of D3 Interiors and Silverstone's trademark quality finish. Silverstone Building Co. offers a truly custom building experience delivering on exceptional lasting quality and style. See plans and photos of finished homes on our website or visit our model home for one on one Q&A.



Now you're cooking.



Comfort in your home.

When you choose natural gas appliances for your home you are making a responsible energy choice. Natural gas is efficient, reliable, comfortable and clean. Homes with all natural gas appliances can save up to \$1,124 annually!

For rebate information, contact our Marketing Department | 402.504.7148



Clean, affordable natural gas.

Homes with natural gas appliances reduce carbon dioxide emissions up to 75 percent compared to all-electric homes. With lower energy bills and convenient amenities, natural gas is the right choice for the planet and your family.



METROPOLITAN
UTILITIES DISTRICT

*Proud sponsor of Build Omaha's
2019 Fall Parade of Homes*

mudomaha.com



AL BELT CUSTOM HOMES



HOME NUMBER 18

18209 Redwood Street
Garden Oaks

\$625,000 | 5 Bed | 5 Bath | 4 Car | 4,194 SF

SALES BY:

BRIAN WILSON | 402-850-0731

BERKSHIRE HATHAWAY HOMESERVICES
AMBASSADOR REAL ESTATE

Stunning Al Belt Custom Homes 3153 Plan in popular Garden Oaks of Millard. Massive gourmet kitchen with oversized custom cabinets, high-end stainless steel appliances, huge fridge/freezer, granite countertops, large island, 5" rift and quarter sawn oak floors, hearth room with stone-to-ceiling fireplace, 10' ceilings on main floor, linear fireplace in great room, transom window at great room/kitchen. Huge covered composite deck with

aluminum railings and steps down to patio. Beautiful master bath with walk in shower, jetted tub, double sinks, fantastic walk in closet. Finished lower level offers full bar, 5th bedroom, 3/4 bath, large family room and walkout door to covered patio. Pella windows, super insulation package. Great walk-out lot backing trees, beautiful landscaping...an amazing home!



www.albeltcustomhomes.com



PRESENTING SPONSOR



FALL PARADE OF HOMES
PINE CREST HOMES



\$345-\$400 | 4 Bed | 2.5 Bath | 3 Car | 1,902 SF

SALES BY:

TERI AVARD | 402-515-1113
JOEL JOHNSON | 402-957-4058
BERKSHIRE HATHAWAY HOMESERVICES
AMBASSADOR REAL ESTATE

HOME NUMBER 19

20015 Polk Street
Falling Waters

Want a house that makes people stop in their tracks, mouth open and just take in the view? Then the Vista by Pine Crest Homes is the one.

The heart of this ranch style home is the living area and the kitchen. Wide open spaces feature abundant windows that flood the space with natural light. The Great Room is fully open to the kitchen where there is ample work and prep space, and that's before you even get to the island!

Set off completely from the other bedrooms is the Master Suite. The well-lit, generous sized sleeping area leads towards a Master Bath and Master Closet space.

If the idea of tripping over laundry and hampers on your way in to the house from the garage isn't for you, then you'll love having the laundry room next to where you actually store your clothes. The Vista offers connectivity from the Master Closet to the Laundry Room. It just makes sense!

Kick up your feet on your patio furniture and gaze out at the stars on the covered patio that acts as an extension of the Great Room and Kitchen.



BuildPineCrest.com





21018 Cumberland Drive
Elkhorn NE 68022



SIERRA
PACIFIC
WINDOWS

A Division of Sierra Pacific Industries

Christensen Lumber

Since 1923 Still the Pro's Choice!



www.christensenlumber.com



YOUR PROJECT. YOUR PASSION.

In the building and remodeling industry, your reputation is only as good as the products you use.
And our reputation is only as good as the products we offer.

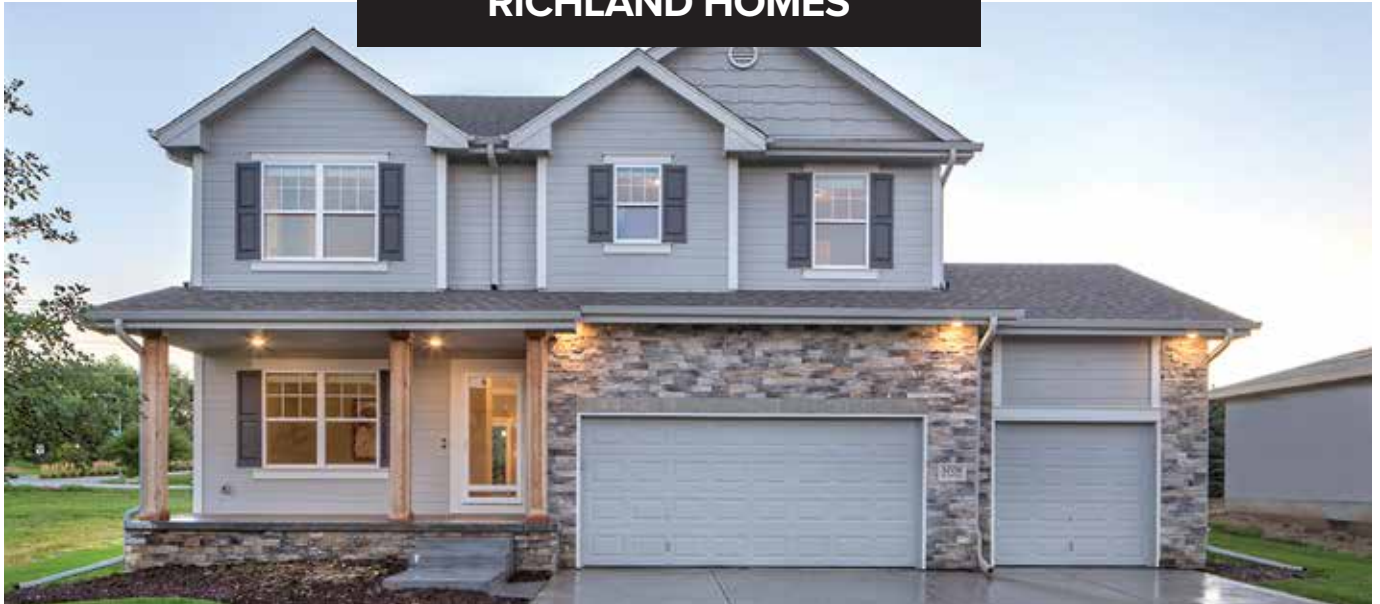
Contact us today to discuss window and door solutions for your next project.

— THE —
**WINDOW
& DOOR** STORE

The Window & Door Store
13819 Industrial Road
Omaha, NE 68137
402-333-4321

MARVIN®

FALL PARADE OF HOMES
RICHLAND HOMES



\$275-\$325 | 4 Bed | 2.5 Bath | 3 Car | 2,434 SF

SALES BY:

ANNE TORCZON | 402-983-7372

NEBRASKA REALTY

HOME NUMBER 20

**4112 S. 213 Street
Westbury Creek**

Send the invites; the party's at your place. The Ruby by Richland Homes begs to be filled with friends and family. Gather around the kitchen island for a glass of wine and finally take your turn at hosting Thanksgiving in the Formal Dining Room featured in the Ruby.

A spacious Drop Zone offers a bench with shelves and hooks, the perfect place to drop back packs.

On the second floor the spacious Master Suite featuring a double vanity, tiled shower and large closet is a must see.

Other incredible standard features in all Richland Homes include: rounded corners throughout, Cambria quartz kitchen countertops, LED under cabinet lighting, a USB outlet in the Kitchen and Master Bedroom, sprinkler system, two trees and too many more to list.

There are three modern exterior elevations to choose from and a long menu of items to select from to make this your own home every time.

RICHLAND
HOMES

BuildRichland.net



ADVANTAGE DEVELOPMENT INC.



HOME NUMBER 21

21760 I Street
Westbury Farm

\$540,240 | 4 Bed | 4 Bath | 3 Car | 3,324 SF

SALES BY:

JENN BENNETT | 402-689-2378

BERKSHIRE HATHAWAY HOMESERVICES
AMBASSADOR REAL ESTATE



BRAND NEW MODEL!!! The latest creation from **Advantage Development Inc.**, custom homes by **Alan Hans**, and our in-house designer & draftsman is **"The Raegan"**. This open concept ranch floor plan screams CLASS & SOPHISTICATION featuring main floor private master suite with laundry access from large walk-in closet **PLUS** a 2nd mini-suite makes a great mother-in-law quarters, teenage haven or guest retreat. Gorgeous chef's kitchen features custom cabinetry from our local cabinet maker, large island with tons of seating & a pass-through butler's pantry. Walkout lower level boasts unique walk-around "Gatsby" inspired wet bar with space for wine cellar, expansive Rec Room, 2 more bedrooms & a full bath. Oversized 3 car executive side load garage. **Call today to ask about our abundant LOT selection** in Elkhorn, Gretna, Papillion, Millard, Bennington & more! **Come take a look for yourself** and see what a difference **quality** build & products makes! Marvin Integrity windows, Zipwall, Trane, Kohler, 11 7/8" I Joist Silent Floor System, copper water lines, 30 year basement waterproof warranty, REScheck Energy Efficient Certified, only the best going into every one of our homes. **Choose Advantage and truly LIVE in what you LOVE!**



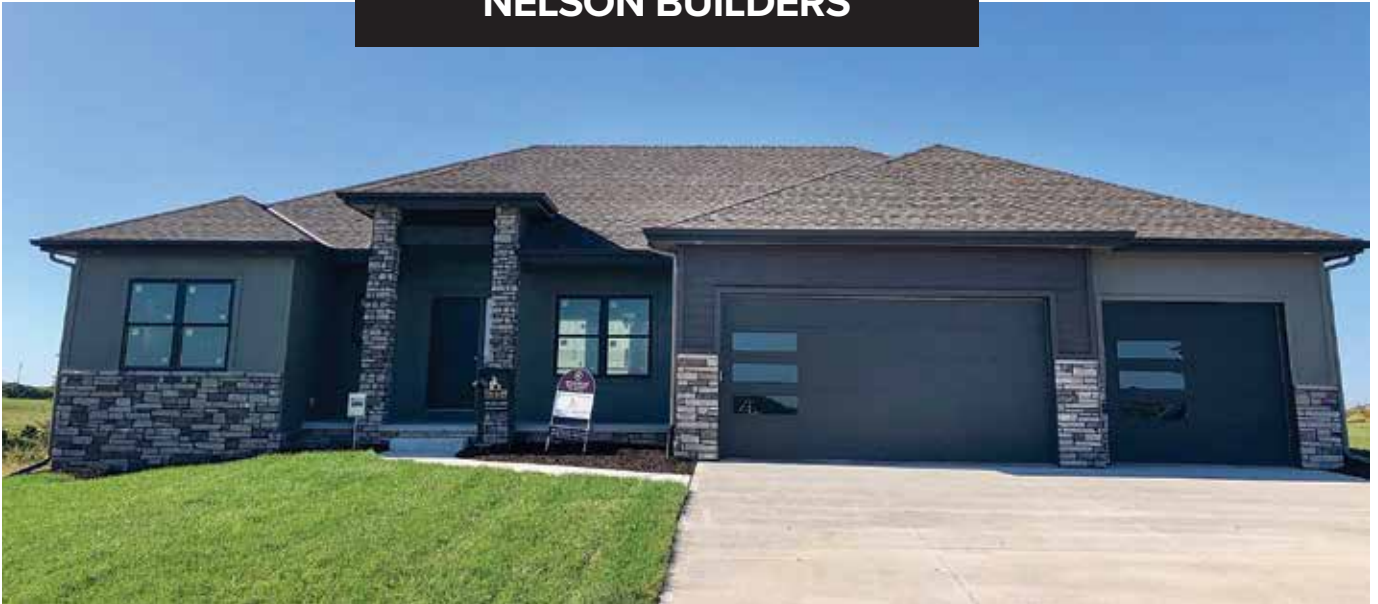
ADVANTAGE
DEVELOPMENT
innovative style...innovative builder
homes by Alan Hans

www.advantagedevelopmentinc.com

PRESENTING SPONSOR



FALL PARADE OF HOMES
NELSON BUILDERS



\$447,775 | 4 Bed | 3 Bath | 3 Car | 3,309 SF

SALES BY:

MARIE OTIS | 402-670-8775

BERKSHIRE HATHAWAY HOMESERVICES
AMBASSADOR REAL ESTATE

HOME NUMBER 22

**21763 K Street
Westbury Farm**

Be the first to enjoy this brand-new Montgomery walkout ranch home by Nelson Builders.

The kitchen is designed for people who like to cook and entertain at the same time opening to the great room and dining area; featuring massive center island, chef's gas cooktop and stainless steel hood vent, walk through butler's pantry, under cabinet outlets & lights, quartz counter tops, tile backsplash and tile flooring.

Imagine gathering with family and friends in the thoughtfully designed great room with custom stone fireplace flanked by lower cabinets and distinctive floating shelves. Extra windows flood the room with natural light drawing attention to the unique box grid ceiling.

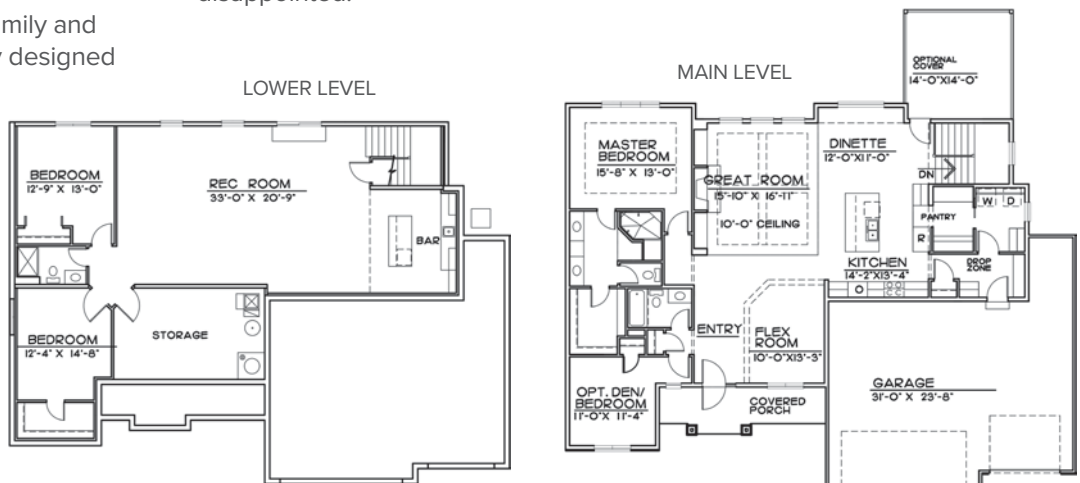
The spacious master retreat with walk in closet boasts a bath to spoil you with a large walk-in dual shower heads, and double sinks with a decorative arch.

The finished basement has a spacious rec room for whatever your passions may be! A fabulous wet bar with island, two bedrooms and $\frac{3}{4}$ bath complete this area.

Take a look, you won't be disappointed.



www.nelsonbuildersomaha.com



Quality • Value • Service • Excellence



7301 MAIN STREET • RALSTON, NE

402-592-2850

COMPLETE LINE OF:

Wood Windows & Patio Doors
Clad Windows & Patio Doors
Vinyl Windows & Patio Doors
Specialty Windows
Storm Doors & Windows • Louvers
Sky Lights-Wasco®/Solatube®

AVAILABLE FEATURES:

- Snug Fitting Designs • Low-E Glass
- Custom Sizing • Easy Cleaning
- Service • Repair Available



5802 SO. 72ND • RALSTON, NE

402-331-0377

- Oak-Maple-Alder Pre-Hung Doors
- Wide Variety of Molded Panel Doors
- Masonite Steel / Fiberglass Doors
- Decorative Door Lights
- Wood-Vinyl & Clad Exterior Door Frames
- Oak-Maple-Metal Stair Parts
- Kwikset Handles & Lock Sets
- Plywood-Wood & Metal Shelving

The Genuine. The Original.



*Don't be fooled. Look for the
"Overhead Door" Ribbon!*

1222 ROYAL DR. • PAPILLION, NE

402-331-0526

Beautify your garage with a new
raised panel steel door.
The look and beauty of wood with the
security and low maintenance of steel.
In standard and custom door widths.

Garage Door Openers with Remote
Ask About Installation

Free Estimates • Call Today
24-Hour Emergency Service
ONE CALL DOES IT ALL!

www.aaabuildingcomponents.com

FALL PARADE OF HOMES
SHOWCASE HOMES



\$475,000 | 4 Bed + Den | 3 Bath | 3 Car | 3,280 SF

SALES BY:

APRIL WILLIAMS | 402-301-3012
BERKSHIRE HATHAWAY HOMESERVICES
AMBASSADOR REAL ESTATE

HOME NUMBER 23

4215 S 218th Avenue
Westbury Farm

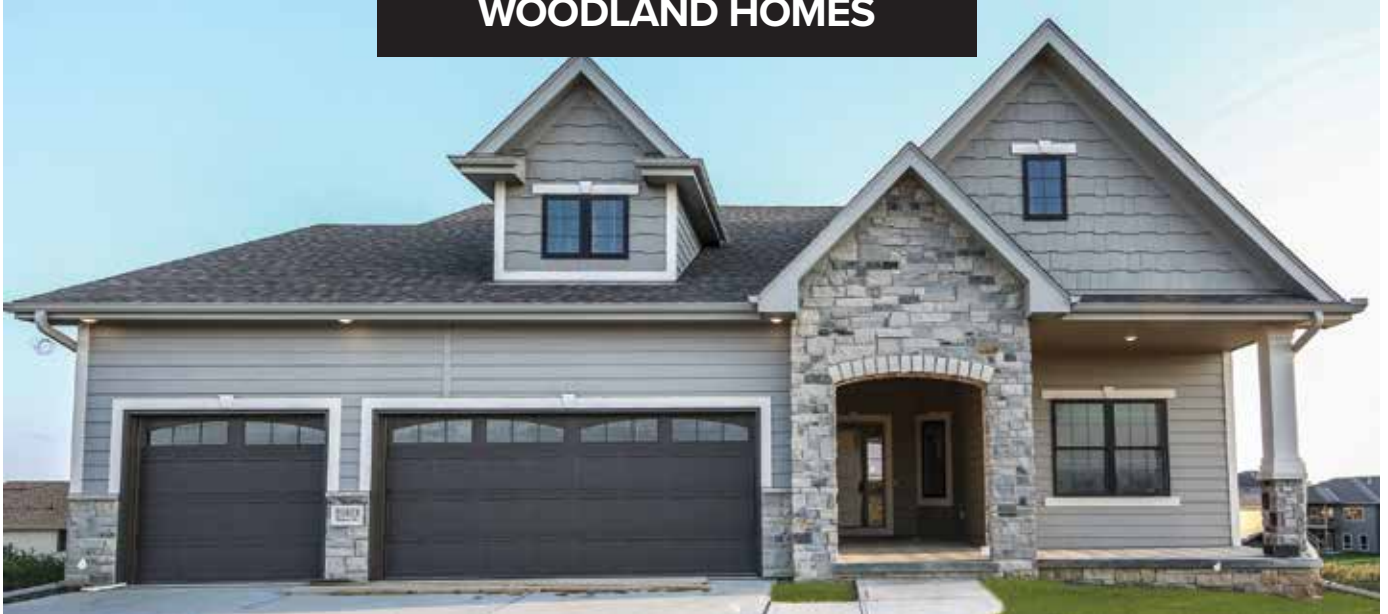
- Generous upgrades and modern features throughout
- Great room with linear fireplace, shiplap wall and built-in cabinets that make a big statement
- Gorgeous kitchen with shaker cabinets, wood cabinet hood, large island with quartz countertops and huge walk-in pantry with coffee bar
- Master closet connects to laundry room
- Finished basement with large rec area, wetbar, two beds, $\frac{3}{4}$ bath and storage room



www.showcasehomesomaha.com



FALL PARADE OF HOMES
WOODLAND HOMES



HOME NUMBER 24

21813 Blaine Street
Westbury Farm Villas

\$425-\$500 | 4 Bed | 3 Bath | 3 Car | 3,022 SF

SALES BY:

TRACI VACANTI | 402-672-9071

BERKSHIRE HATHAWAY HOMESERVICES
AMBASSADOR REAL ESTATE

The new Williamsburg by Woodland Homes. Located in Westbury Farms, Woodland Homes newest villa area, with plenty of walk-out lots that back to green space, trees and ponds. Daylight and flat lots also available. The Williamsburg is full of special features. A beautiful bay window in the great room, a grand fireplace with stone all the way to the ceiling. The great room has stunning wood beams. The kitchen has a huge island and pantry. Great curb appeal with a spacious, covered front porch. The garage entrance opens to a mud room with a drop zone and a bench. You will love the walk-in ceramic tile shower in the master suite. Woodland Homes has been building exceptional villas in the Omaha area for decades. Reserve your lot today!



BuildWoodland.com



PRESENTING SPONSOR



FALL PARADE OF HOMES
WOODLAND HOMES



\$518,961 | 4 Bed | 4 Bath | 3 Car | 3,500 SF

SALES BY:

MARK CIOCHON | 402-578-1910
BERKSHIRE HATHAWAY HOMESERVICES
AMBASSADOR REAL ESTATE

HOME NUMBER 25

4311 S 219th Street
Westbury Farm

Woodland Homes new Loudon ranch is just what you asked for. Spacious great room with decorative ceiling, horizontal fireplace with stone to ceiling. Kitchen has tons of cabinets with oversized island, pantry & more. Walk-out onto covered deck to enjoy morning sunrises. Oversized master with master bath everyone will be jealous of. Second bedroom/bath on main, oversized 3.5 car garage. Lower level has large family room, fireplace, bar with quartz tops, Jack & Jill beds & walk out to oversized patio. Numerous upgrades included in price. Open Sundays until sold. Call for other locations & models or view the virtual tour at www.housesinomaha.com.



BuildWoodland.com





Exceptional design...
Custom cabinetry created with your inspiration.

CBD

Cabinetry By Design

NEW CONSTRUCTION • REMODELS

11417 S 147th St. / Omaha, NE 68138 / 402-891-1010
cabsbydesign.com



Join us for the



MODELS CURRENTLY
FOR SALE:

4311 S 219th Street
\$518,961
The Loudon



21711 I Street
\$484,437
Cabernet II Cape Cod
Model home not for sale (some
options not included)



11618 Cooper Street
\$465,995
Cabernet II Craftsman



11406 S 120th Avenue
\$693,620
The Trenton
by Birchwood Homes

MARK CIOCHON
REALTOR

Cell: 402-578-1910
mark.ciochon@bhhsamb.com



BERKSHIRE HATHAWAY
HomeServices
Ambassador Real Estate



*Proudly representing Woodland Homes and
Birchwood Homes*



NOW BUILDING IN:

Andresen Meadows Estates	Aspen Creek North
Southpointe Estates	Ashbury Creek
Windgate Ranch	Asbury Farm
Westbury Farm	Shadow Lake II
Numerous other areas from Blair to Ashland	Granite Lakes

FALL PARADE OF HOMES
WOODLAND HOMES



\$568,000 | 5 Bed | 4 Bath | 3 Car | 3,137 SF

SALES BY:

MARK CIOCHON | 402-578-1910
BERKSHIRE HATHAWAY HOMESERVICES
AMBASSADOR REAL ESTATE

HOME NUMBER 26

21711 I Street
Westbury Farm

Model home not for sale. Open Saturday and Sunday 12-4 PM or by Appointment Woodland Homes Cabernet - This one is done right! Over \$10,000 worth of appliances, \$10,000 in light fixtures and \$17,000 in Cabinet upgrades are just a start of all the cool options in this Cabernet II Plan. 5 bedrooms, 4 baths, Huge Master suite with sitting room. Main floor with hardwood floors, Huge island, knotty alder beams, Ship lap in ceiling areas. Walk through pantry. Back office or bedroom 5 tucked away for peace and quiet or play room on the main floor. Oversized garage. Building all over the metro. Visit www.housesinomaha.com for more photos and information.



BuildWoodland.com



NATHAN HOMES



HOME NUMBER 27

3872 S 208th
Grandview Ridge

\$734,940 | 4 Bed | 4 Bath | 3 Car | 2,850 SF

SALES BY:

SALLIE ELLIOT | 402-630-5953

THE PRIORITY GROUP, BERKSHIRE HATHAWAY
HOMESERVICES AMBASSADOR REAL ESTATE



Your home of serenity is ready for you to enjoy today. Experience Nathan Homes Prairie Zen with private backyard that's beautifully situated overlooking trees and lake. The lines are simple, organic yet elegant. Open floor plan with sleek gourmet kitchen, integrated appliances, two level island with quartz counters which opens to dining & great room. Beautiful maple floors flow into fun tile treatments in the back entry & powder bath. Office/flex space has unique design with double custom made barn doors. Master suite is a peaceful retreat with custom wood wall, floating vanities, soaker tub and teak accented shower. Back staircase views the stunning tree line with a wall of windows. Upstairs loft area has built in benches & cabinets with a beverage center, perfect for hanging out. 3 bedrooms upstairs with on-suite and jack & jill. Covered deck & patio with a gas fire pit accent in back. Elkhorn South Schools, close to schools, shopping, restaurants & highway access.

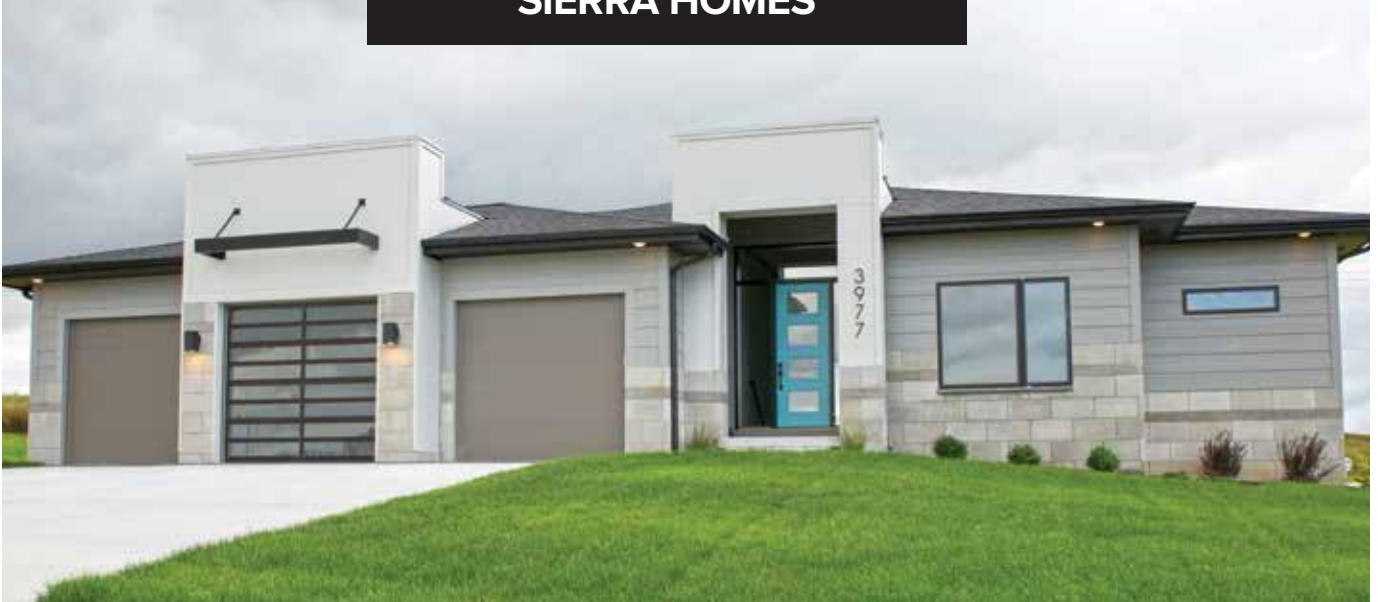


www.nathanhomesomaha.com

PRESENTING SPONSOR



SIERRA HOMES



\$540,000 | 4 Bed | 3 Bath | 3 Car | 3,344 SF

SALES BY:

TAMARAH KRONAIZL | 402-830-7811

EXCLUSIVE LISTINGS GROUP
BERKSHIRE HATHAWAY HOMESERVICES
AMBASSADOR REAL ESTATE

HOME NUMBER 28

**3977 George B Lake Pkwy.
Grandview Ridge Estates**

This stylish modern ranch is enveloped in light & comfort! Open concept floor plan is complete with a bright & airy great room showcasing 11' ceilings, 3-sided electric tiled fireplace & brilliant light tray accenting the entry & great room. State -of-the-art kitchen includes a gas cooktop, custom designed acrylic island & hood with a splash of warm wood accents. Custom cabinets & quartz counters throughout. Master Suite boasts generous proportions accentuated with his & her vanities, LED mirrors, massive 2- person tiled walk-in shower with double heads, laundry access & huge walk-in closet. A second bedroom with en-suite is also featured on this floor, with two more bedrooms in the basement. Finished Lower Level is a show piece with wet bar, LED accented floating shelves, rec/game room & ample storage.





NOIR™ Design Expression

BEST. DECISION. EVER.

For projects of any size, perfection often requires making difficult decisions. Allow the experts at Ferguson to make things easy by introducing you to an extensive collection of stylish products from prominent brands, all designed to bring your vision to life. Learn more at fergusonshowrooms.com

FERGUSON
Bath, Kitchen & Lighting Gallery

OMAHA

[FERGUSONSHOWROOMS.COM](https://fergusonshowrooms.com)

IDEAL DESIGNS CUSTOM HOMES



\$668,000 | 4 Bed | 4 Bath | 4 Car | 3,955 SF

SALES BY:

STEVE LARSEN | 402-672-5450

BERKSHIRE HATHAWAY HOMESERVICES
AMBASSADOR REAL ESTATE

HOME NUMBER 29

21415 A Street
Blue Sage Creek

Ideal Designs Fenix ranch plan. Expect to be impressed. The new style built-in kitchen table is a show stopper. Incredible led lighting options are so cool. The master bath is unbelievable. You won't want to miss this home. Remember Details always tell the Story.



www.idealdesignsomaha.com



NATHAN HOMES



HOME NUMBER 30

2008 S 211th Street
Windgate Ranches

\$650,000 | 4 Bed | 4 Bath | 3 Car | 3,000 SF

SALES BY:

SALLIE ELLIOT | 402-630-5953

THE PRIORITY GROUP, BERKSHIRE HATHAWAY
HOMESERVICES AMBASSADOR REAL ESTATE



Your unique Modern Organic 2 story is full of details with you in mind. Open floor plan 2 story with great room, office, gourmet kitchen, huge walk in pantry. Gorgeous wood look tile floors throughout the main level, unique herringbone detailed island, tons of cabinet space. Your powder bath has an original teak sink. Spacious master suite with freestanding tub, dual vanities, large walk in shower, walk in closet with barn door. Jack & Jill suite bedroom/ bathroom with luxury details, on-suite bathroom with award winning tile. Can you find the secret room upstairs? You'll have to come and see! Large flat lot, spacious covered patio. Elkhorn South school district, close to highway, expressway, schools, shopping, and fine dining. Nathan Homes strives to make your new home it's own creation never duplicated!

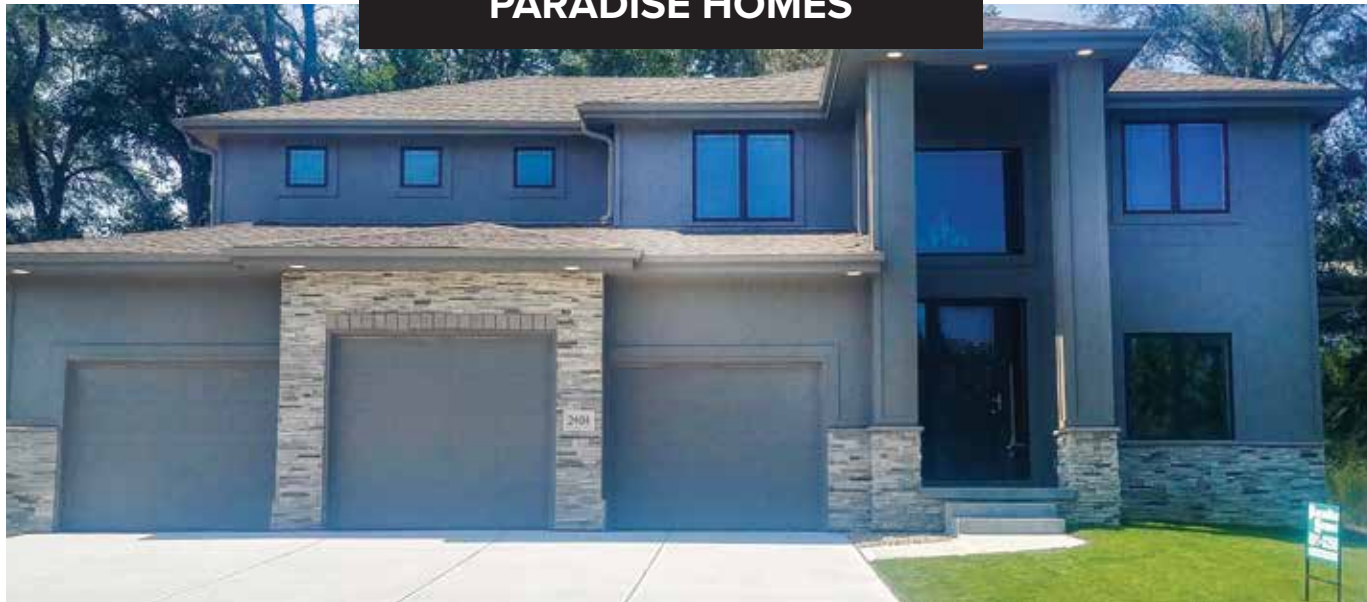


www.nathanhomesomaha.com

PRESENTING SPONSOR



FALL PARADE OF HOMES
PARADISE HOMES



\$409,950 | 4 Bed | 3 Bath | 3 Car | 2,869 SF

SALES BY:

GREG HAER | 402-677-8380
NP DODGE REAL ESTATE

HOME NUMBER 31

2404 N 188 Terrace
Spruce Ridge

Paradise Homes popular 4 bedroom, 4 bath plan - The Oakly 3 offers an open 2 story entry, large kitchen, family room and multi-use flex room. A closet was added to the flex room and connects to a ¾ bath. This makes a great guest bedroom. Oversized trim, covered deck and hickory floors highlight this home.



www.paradisehomesomaha.com



FALL PARADE OF HOMES
TIMBERLINE HOMES INC.



HOME NUMBER 32

18425 Boyd Street
Indian Pointe

\$442,950 | 5 Bed | 4 Bath | 3 Car | 3,150 SF

SALES BY:

TODD YOUNG | 402-657-5667
BRENDA YOUNG | 402-677-0364

NP DODGE REAL ESTATE



Don't miss this new innovative Timberline home. Our new Alpine 2 ranch plan. For your convenience the master bedroom, master bath and laundry room are continuous. The master bedroom is a private retreat from the other bedrooms located on the other side of the home. Our large open spacious kitchen includes granite counters, tile backsplash, gas cooktop, SS hood and large walk-in pantry.

Timberline has been building quality custom homes for over 25 years. Our homes feature many upgrades in our pricing including granite, tile, painted or birch custom cabinets, covered deck, grand stone fireplace, finished garage, SS appliances, tile backsplash, 3 car garage, large walk-in pantry and more. We have quality lots throughout including private treed and green space lots. Timberline Homes builds throughout the Metro and surrounding communities including acreage homes. Please visit us at our new Alpine 2 model in Indian Pointe and let us share the Timberline story with you. We look forward to your visit. Respectfully, Timberline Homes



timberlinehomesomaha.com

PRESENTING SPONSOR



FALL PARADE OF HOMES
HILL CUSTOM HOMES, INC.



\$282,760 | 2 Bed | 2 Bath | 2 Car | 1,473 SF

SALES BY:

JAN HILL | 402-305-8116
JOHN HANSON | 402-981-8950
NP DODGE REAL ESTATE

HOME NUMBER 33

16017 Weber Street
Pine Creek

Welcome to Laid Back Living in this warm and inviting Villa home by Hill Custom Homes, Inc. This plan with 2 bedrooms, 2 baths, den/office & a 2 car garage features a great room with large windows, fireplace & TV niche. The fully equipped kitchen has SS appliances, custom birch cabinets, granite, easy care wood floor & pantry. Baths include granite and ceramic tile. Laundry includes washer & dryer. This energy efficient home has no exterior maintenance & the monthly fee includes lawn care, snow removal, trash svc. & sprinkler start up & shut down. Basement is roughed in for ¾ bath & wet bar & is ready to finish. Come experience the attention to detail and quality of this ready to move in home.



www.hillcustomhomesinc.com



BuildOmaha
.org

BUILD OMAHA MEMBERS

Absolute Customs
Advantage Development Inc.
Archistructure
Barr Homes
Belt Construction Co., Inc.
Binks Construction Inc /bci homes
Birchwood Homes
Bloomfield Custom Homes
Callaway Homes
Carson Custom Homes
Castlebridge Homes
Celebrity Homes
Citadel Signature Homes
CROWN, LTD.
D&E Custom Building and Design
Dave Paik Builders
DreamScape Homes
Gaver Custom Homes Inc.

Grace Homes
Griffin Homes
H3 Custom Homes
HBC Homes, Inc.
Hildy Homes
Home Building Consultants, Inc
Horizon Realty, Inc
Ideal Designs Custom Homes
Trademark Homes, Inc.
Jeck & Company Builders
Ken Oster Homes
Legendary Homes, LLC
Lions Gate Homes
Malibu Homes L.L.C.
Marasco Homes
Nathan Homes
Nelson Builders Inc.

Nilius Builders INC.
Oakhaven Homes, Inc.
Pine Crest Homes
Pohlad Custom Homes, Inc.
Prairie Homes, Inc.
Prestige Homes
Richland Homes
Renaissance Custom Homes Inc.
Royal Homes
Showcase Homes Inc.
Sierra Homes
Silverstone Building Co.
Thomas David Fine Homes
Vencil Homes
Woodland Homes
Zych Construction

BUILD OMAHA ASSOCIATES

AAA Building Components
Access Bank
Adams & Sullivan P.C., LLP
Baltazar's Stone
Builders Supply Company, Inc.
Cabinetry By Design
Centurion Stone of Omaha
Christensen Lumber
Core Bank
Dream Home Drafting
Echo Systems
Edward's Stone
Equitable Bank
Falcone Land Development
Ferguson Enterprises

Fireplace, Stone and Patio
Floor Fashions
Habitat for Humanity
Harter Company Inc
Imperial Tile Company, Inc.
Ken Tinnes Residential Design, LLC
Lamp, Ryneerson and Assocaites
Lee Douglas Interiors Inc
Maverick Construction Systems
McKean's Floor to Ceiling
Millard Lumber Inc.
Nebraska Title Company
Pella Windows and Doors
Pinnacle Bank
Premier Bank

Quality Glass & Mirror Services Inc
Quinn Insurance Inc
Ready Mixed Concrete Co.
Seal-Rite Insulation, Inc.
Stephens & Smith Construction Co., Inc.
Taylor Made Home Solutions
The Interior Design Firm
The Window & Door Store
Titan Custom Cabinets, Inc.
United Distributors, Inc.
VirtuActive - 3D Drafting & Design
Watkins Concrete Block
Window Innovations

PRESENTING SPONSOR



METROPOLITAN
UTILITIES DISTRICT



Natural gas: Making meals memorable



An empty propane bottle and a raw steak make for a miserable night.



A natural gas grill means a great night and great food.

Black Hills Energy

Brick & Stone • Outdoor Living



watkinsconcreteblock.com

(402) 896-0900

144th & Giles | Omaha, NE